

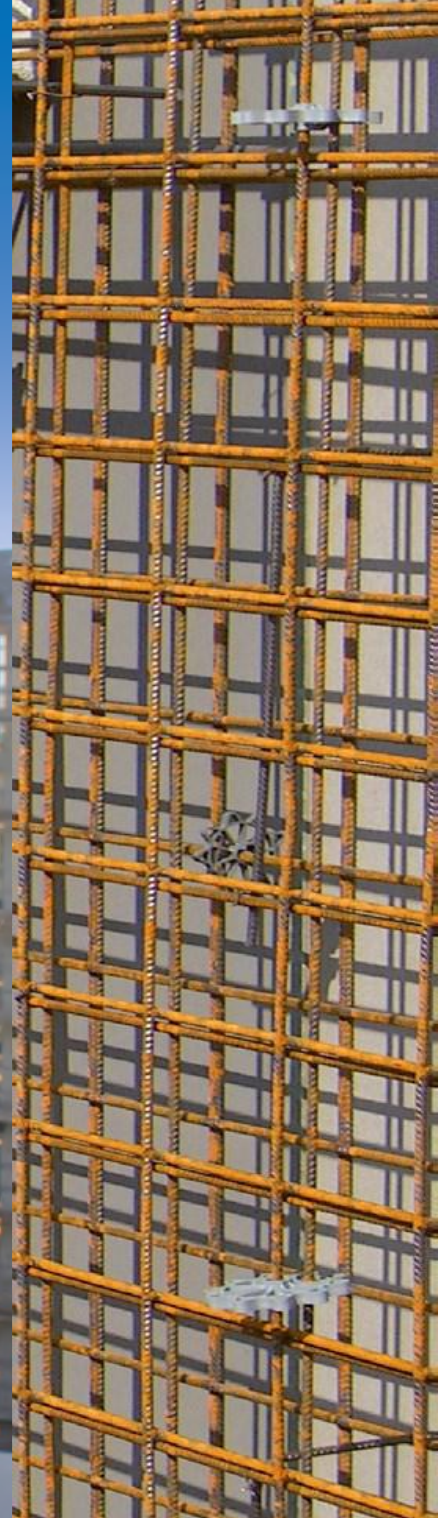


Spacers, Formwork and Precast System

The advertisement features a light gray background with a faint architectural drawing of a dome structure. In the top right corner, the "REUSS SEIFERT" logo is displayed in blue, with the tagline "just perfect." underneath. The central text reads "QUALITÄT INNOVATION" in gray, followed by "PERFECT" in large, bold blue letters, and "SUSTAINABILITY" in gray below it. In the bottom left corner, there is a QR code with the "REUSS SEIFERT" logo and name printed below it. On the right side, there is a 3D rendering of a dome-shaped precast concrete structure with a grid of spacers and formwork.

INVISIBLE BUT INDISPENSABLE

We are there when it is about small building projects and large projects. Where concrete is installed, our products make a fundamental contribution to stability, statics, and durability in an invisible way. Our spacers contribute essentially to the satisfaction of the Eurocode 2 regarding concrete cover. Competence and market leadership are based on over 100 years of business history.



QUALITY: JUST PERFECT

As the leading manufacturers of spacers, sealing, fixing, reinforcement, and formwork products, we are committed to high performance and reliability – from the development of new technologies, production and marketing of our products up to consulting services, training, and technical support on the spot:

just perfect.

SPACERS

U-FIX PLASTIC	3
DRUFA®-TRIPLE FIBRE	3
OBENFIXER XC STEEL	4
TOPFIX TF STEEL	4
TOPFIX TC STEEL	5

SYSTEM FOR PRECAST

MAGNETIC SQUARE BLOCK	5
------------------------------	----------

FORMWORK SYSTEM

DESCHAL-SM	6
DELLE	6

ANNEX

ADDITIONAL NOTES	7
-------------------------	----------

Spacers

U-FIX



SPACERS MADE OF PLASTIC

With lateral recess. Suitable for exposed concrete and prefabricated floors only under certain conditions. Installation recommendations and length limits see Specification „Abstandhalter“ [Spacers] of the German Association for Concrete and Construction Technology DBV.

Art No.	Type	Concrete cover (mm)	Supply length approx. (m)	m per bundle	m per pallet
1607	15	15	2	100	8.000
1608	20	20	2	100	5.600
1606	25	25	2	100	4.800
1609	30	30	2	100	4.200
1618	35	35	2	60	2.880
1629	40	40	2	60	2.400
1627	50	50	2	60	1.680

Colour: grey

Short segments, e.g. 250 mm, 350 mm, 500 mm, as well as other fixed lengths available on request.

Tested according to Specification „Abstandhalter“ [Spacers] DBV- o - L 2 / A of the German Association for Concrete and Construction Technology DBV

DRUFA®-TRIPLE



(Concrete Grade 60MPa)

SPACERS MADE OF FIBRE CONCRETE

Spacer made of fibre concrete for horizontal reinforcement. It is suitable for 2 and / or 3 different concrete covers.

Art No.	Concrete cover (mm)	Cut width (mm)	Packages per sack (pcs.)	Pcs. per pal.
6942	25 / 30	20	500	20000
6944	20 / 25 / 30	20	1000	30000
6945	35 / 40 / 50	24	250	10000
6948	45 / 55 / 60	28	125	5000

Tested according to Specification "Abstandhalter" [Spacers] DBV- o - L 2 / F / T / A of the German Association for Concrete and Construction Technology DBV

SPACERS MADE OF STEEL

Reasonably priced yet sturdy spacer for upper reinforcement made of steel wire (6 mm) with epoxy-coated legs. According to VOB (Part C, Item 5.3.1), Obenfixer XC is part of the reinforcement and is charged together with the reinforcement.

Spacers

OBENFIXER XC



Art No.	Concrete cover (mm)	Bar \varnothing (mm)	Supporting surface in (cm)	PU (pcs.)
20404	80	6	15 x 15	100
20405	90	6	15 x 15	100
20406	100	6	15 x 15	100
20407	110	6	15 x 15	100
20408	120	6	15 x 15	100
20409	130	6	15 x 15	100
20410	140	6	15 x 15	100
20411	150	6	15 x 15	100
20412	160	6	15 x 15	100
20413	170	6	15 x 15	100
20414	180	6	15 x 15	100
20415	190	6	15 x 15	100
20416	200	6	15 x 15	100

Further dimensions available on request.

SPACERS MADE OF STEEL

Type TF with sturdy plastic feet with a \varnothing of 14 mm pre-assembled by the manufacturer, protecting the formwork, resistant to rust, and perfectly suitable for exposed concrete as well as oiled steel formwork.

TOPFIX Type TF



Stirrup length approx.
300 x 300 mm

Art No.	Type	Supporting surface (cm)	Height (cm)	Bar \varnothing (mm)	PU (pcs.)
20382	TF	20 x 20	8	6	50
20383	TF	20 x 20	9	6	50
20384	TF	20 x 20	10	6	50
20385	TF	20 x 20	11	6	50
20386	TF	20 x 20	12	6	50
20387	TF	20 x 20	13	6	50
20388	TF	20 x 20	14	6	50
20389	TF	20 x 20	15	6	50
20390	TF	20 x 20	16	6	50
20391	TF	20 x 20	17	6	50
20392	TF	20 x 20	18	6	50
20393	TF	20 x 20	19	6	50
20394	TF	20 x 20	20	6	50
20395	TF	20 x 20	21	6	50
20396	TF	20 x 20	22	6	50
20397	TF	20 x 20	23	6	50
20398	TF	20 x 20	24	6	50
20399	TF	20 x 20	25	6	50
20400	TF	20 x 20	26	6	50
20401	TF	20 x 20	27	6	50
20402	TF	20 x 20	28	6	50
20403	TF	20 x 20	30	6	50

Further dimensions available on request.

Spacers

SPACERS MADE OF STEEL

Spacer for upper reinforcement supporting large areas, type TC, with epoxy coating at the feet. According to VOB (Part C,Item 5.3.1), the spacer Topfix is part of the reinforcement and is charged together with the reinforcement.

TOPFIX Type TC



Stirrup length approx.
300 x 300 mm

Four-leg spacer with caps for subsequent enlargement of supporting surface (e.g. exposed concrete) available on request.

Art No.	Type	Supporting surface (cm)	Height (cm)	Bar Ø (mm)	PU (pcs.)
8516	TC	20 x 20	6	6	50
8517	TC	20 x 20	7	6	50
8518	TC	20 x 20	8	6	50
8519	TC	20 x 20	9	6	50
8520	TC	20 x 20	10	6	50
8521	TC	20 x 20	11	6	50
8522	TC	20 x 20	12	6	50
8523	TC	20 x 20	13	6	50
8524	TC	20 x 20	14	6	50
8525	TC	20 x 20	15	6	50
8526	TC	20 x 20	16	6	50
8527	TC	20 x 20	17	6	50
8528	TC	20 x 20	18	6	50
8529	TC	20 x 20	19	6	50
8530	TC	20 x 20	20	6	50
20479	TC	20 x 20	21	6	50
20480	TC	20 x 20	22	6	50
20481	TC	20 x 20	23	6	50
20482	TC	20 x 20	24	6	50
20377	TC	20 x 20	25	6	50
20378	TC	20 x 20	26	6	50
20379	TC	20 x 20	27	6	50
20380	TC	20 x 20	28	6	50
20381	TC	20 x 20	29	6	50

Systems For Precast

MAGNETIC SQUARE BLOCK



Solid plastic block with cast-in magnets in steel frame. For fixing, forming recesses, and pour stops on steel formwork in production of precast parts. Can be removed easily from the formwork using a screw and a lever. Retention force approx. 3,500 N.

Art No.	Base (mm)	Height (mm)	Packaging (pcs.)
20808	150 x 150	100	1

Pour stop element for economic use in ceiling and floor slabs. It remains in the concrete; no time-consuming removal required. The surface profiling ensures perfect bond in the working joint. Deschal-SM can be used individually or in pairs (one element each from below and above). Different ceiling thicknesses can thereby be covered with a few types, only.

DESCHAL-SM



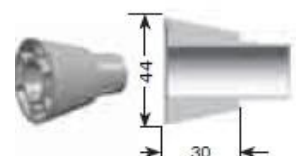
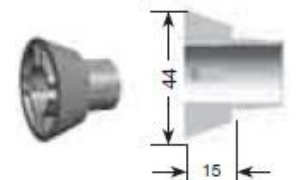
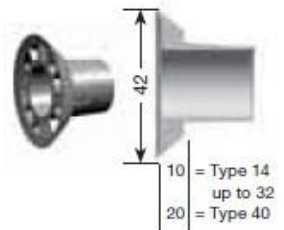
Element length = 1.25 m

Art No.	Type	For ceiling thickness of about (cm)	Height (cm)	Stirrup distance (cm)
3021	SM 16 / 10	16.0 – 18.0	10.0	33
3022	SM 18 / 12	18.0 – 20.0	12.0	33
3023	SM 20 / 14	20.0 – 22.0	14.0	33
3024	SM 22 / 16	22.0 – 24.0	16.0	33
3025	SM 24 / 18	24.0 – 26.0	18.0	33

Further dimensions available on request.

Cones for installation of formwork spacers on site. They are removed from the concrete after removal of the formwork and are reusable.

DELLE



Art No.	Type	Suitable for Durhlass	Pcs. per bag / sack
5414	14	14 / 19	1000 / 5000
5420	20	20 / ..	500 / 2500
5422	22	22 / ..	500 / 2500
5426	26	26 / 30	500 / 2500
5432	32	32 / 38	250 / 1750
5440	40*	40 / 46	125 / 1000

* 20 mm covering

5405	22 / 1.5	22 / 1.5	250 / 2500
------	----------	----------	------------

5404	22 / 2	22 / ..	250 / 1000
------	--------	---------	------------

5403	22 / 3	22 / ..	250 / 1000
------	--------	---------	------------

■ OUR MATERIALS

Plastic spacers

Most of our products are made of non-hazardous, recuperated PE (polyethylene). Only extruded profiles, such as linear spacers, distance tubes, or chamfers, are made of PVC.

Spacers made of fibre concrete

The Drufa series is made of freeze-proof and sulphateresistant fibre concrete blends.

Resistance

Our spacers are resistant to alkalis and / or acids and bases usually found at building sites. In case of high mechanical, thermal, or chemical load, concrete spacers should be preferred. Moreover, fibre concrete spacers are freeze resistant. Concrete spacers have a material strength of at least 25 N/mm². Long-term, intensive light impact may be harmful to products made of polyethylene (PE). This is why these products should be protected against insolation and / or light daylight when stored (e.g. covered with a black film).

Reinforcement connections

Concrete steel used by us complies with the Specification

"Ruckbiegen" [*Rebending*] of the German Association for

Concrete and Construction Technology DBV.

Other materials

Special reference is made in this catalogue to special materials (e.g. stainless steel).

■ TEST CERTIFICATES

Many products have been subjected to tests according to

applicable standards and regulations. These tests evidence

that the products function properly when installed appropriately. An overview as well as the test certificates are available on our website.

■ STANDARDS AND RECOMMENDATIONS

The following applies to spacers:

- DIN EN 1992-1-1 (Eurocode 2)
- DIN EN 13670

always in connection with the corresponding national annexes applicable to Germany

- Specification "Abstandhalter" [*Spacers*] of the German Association for Concrete and Construction Technology DBV
- Specification "Betondeckung und Bewehrung" [*Concrete cover and reinforcement*] of the German Association for Concrete and Construction Technology DBV
- Specification "Unterstützungen" [*Supports*] of the German Association for Concrete and Construction Technology DBV.

DBV Specification "Abstandhalter"

[*Spacers*]

Spacers have to be made of a material which does not damage the concrete nor the reinforcement and which is not attacked by concrete, humidity, nor weather. Spacers shall have a sufficient load-bearing capacity and tilting resistance and provide for the ability to be fastened sufficiently at the reinforcing bar - if required. In case of special stress such as increased freeze/thaw resistance, thermal resistance, and resistance to ingress of water, spacers are to be selected the suitability of which has been proven by corresponding tests (also refer to marking of spacers according to Specification "Abstandhalter" and allocation to the required exposure classes according to DIN EN 1992).

DBV Specification

"Betondeckung und Bewehrung"

[*Concrete cover and reinforcement*]

In order to comply with the required laying dimensions, spacers are to be ordered and installed according to the requirements of the DBV Specification "Abstandhalter". Please refer to Table 4 for the number and arrangement of the spacers.

DBV Specification "Unterstützungen"

[*Supports*]

Supports are parts which secure the position of the upper reinforcement layer. Linear supports (e.g. Dista) and punctiform supports (e.g. four-leg spacer (Vierbein)) are differentiated. Supports for the upper reinforcement layer can either be placed on the formwork or elevated on the lower reinforcement layer. For the laying distances of supports please refer to Table 4 of the Specification.

When placing the supports onto the formwork, effective corrosion protection is to be provided at all supporting points (feet). For slabs with exposed concrete bottom surface, special attention is to be paid to the supporting points of the feet and a corresponding selection is to be made. The DBV Specifications can be obtained from Deutscher Beton- und Bautechnik-Verein e. V., Kurfürstenstrasse 129, D-10785 Berlin.

Fire behaviour

Concrete, reinforced concrete, and prestressed concrete are allocated to class A1 (non-combustible) according to DIN 4102, Part 4. Standard plastic spacers of Building Material Class B may also be used as spacers without losing the classification according to Section 3.1.5.4 of the DIN standard.

NOTES



MALAYSIA

Halfen Moment Sdn. Bhd.

28 Jalan Anggerik Mokara 31/59,
Kota Kemuning, 40460 Shah Alam
Selangor, Malaysia

T : +603 5122 4182

F : +603 5122 4184

E : info@halfen-moment.com

SINGAPORE

Halfen-Moment Pte. Ltd.

20 Woodlands Loop,
Singapore 738321

T : +65 6266 6802

F : +65 6266 6980

E : hmsg@halfen-moment.com

INDIA

Halfen Moment India Pvt Ltd

No 601, Presidential Plaza,
LBS Marg, Ghatkopar - West,
Mumbai 400 086,
India

T : +9122 2500 7092

F : +9122 2500 7093

E : hmin@halfen-moment.com

PHILIPPINES

Halfen-Moment, Inc.

U-743 City & Land Mega Plaza Condominium,
ADB Avenue Corner Garnet Road,
Ortigas Center Pasig City,
Philippines

T : +632 706 1828

F : +632 706 1828

E : hmph@halfen-moment.com



 **Leading with Integrity** 

www.halfen-moment.com